



bel etage



loel etage

bel etage

WOLFGANG BAUER

## 20. HERBSTSALON 2019

VERKAUFS-AUSSTELLUNG  
IN BEIDEN GALERIEN

16. SEPTEMBER – 21. DEZEMBER 2019

EXHIBITION AND SALE OF WORKS OF ART  
IN BOTH GALLERIES

16 SEPTEMBER – 21 DECEMBER 2019

Detaillierte Beschreibungen der Objekte finden Sie in Deutsch und Englisch auf unserer Webseite [www.beletage.com](http://www.beletage.com).  
Wir senden Ihnen diese auf Anfrage gerne per Post oder E-Mail zu.  
Sämtliche Maßangaben sind ungefähre Angaben und dienen der Information.

Detailed descriptions of the objects presented in this catalogue are available for download in German and English from our website [www.beletage.com](http://www.beletage.com).  
Upon request, we will also be pleased to send you these descriptions by post or email.  
All measurements are approximate and for information only.

Die Deutsche Nationalbibliothek verzeichnet diese Publikation in der Deutschen Nationalbibliografie.  
The German National Library lists this publication in the German National Bibliography.

### IMPRESSUM/IMPRINT

Herausgeber/Publisher: bel etage Kunsthandel GmbH, Wien/Vienna  
Konzeption und Organisation/Conception and organisation: Wolfgang Bauer  
Objektbeschreibungen, Experte/Object descriptions, expert: Wolfgang Bauer  
in Zusammenarbeit mit/in cooperation with: Madeleine Jedlicka BA, Mag. Agnes Prosch  
Übersetzung/Translation: Tim Sharp, Mag. Sabine Hübler  
Lektorat/Proofreading: Mag. Eva Martina Strobl, Mag. Sabine Hübler  
Fotos/Photos: August Lechner  
Grafische Gestaltung/Graphic design: August Lechner  
Herstellung/Print: Druckerei Ferdinand Berger & Söhne GmbH, Horn  
Alle Rechte vorbehalten/All rights reserved  
© bel etage, Wien 2019  
ISBN-978-3-902117-35-9  
Titelseite/Front cover: Katalog Nr. 47/Catalogue no. 47  
Rückseite/Back cover: Katalog Nr. 66/Catalogue no. 66

bel etage

A-1010 Vienna, Mahlerstraße 15

Bel Etage, Kunsthandel GmbH · phone: +43 1 512 23 79 · fax: ext. 99 · [office@beletage.com](mailto:office@beletage.com) · [www.beletage.com](http://www.beletage.com)

dorotheergasse 12

A-1010 Vienna, Dorotheergasse 12

## INDEX

KÜNSTLER UND FIRMEN / ARTISTS AND COMPANIES Kat. Nr. / cat. no.

Seite / page

BAUER, Leopold.....	25	33
BECKERT, Adolf.....	57-58	67
BERNATZIK, Wilhelm.....	18-19	26-27
BERNDORF.....	46	56
BRESSLERN-ROTH, Norbertine.....	66	75
CLARFELD & SPRINGMEYER.....	4	10-11
FRANK, Raoul.....	1	6
GLASFACHSCHULE HAIDA.....	55-56	66
GLASFACHSCHULE STEINSCHÖNAU.....	57-58	67
GMUNDNER KERAMIK.....	51-52	61-62
GURSCHNER, Gustav.....	5	12
HAGENAUER, Franz.....	82, 87-91, 93-96, 98	90, 94-98, 100-103, 105
HAGENAUER, Karl.....	81, 85-86, 97	89, 92-93, 104
HERRMANN, J. & J.....	41	51
HOFFMANN, Josef.....	42-44, 50, 53, 63-64, 67-74, 76-77, 79	52-54, 60, 63, 72, 73, 76-82, 84-85, 87
HUBER, Ernst.....	59-60	68-69
JAROSINSKI & VAUGOIN.....	79	87
K. K. KUNSTERZGIESSEREI.....	5	12
KAHRER, Max.....	3.1-3.2	8-9
KASPARIDES, Eduard.....	28.1, 28.2	36-37
KITT, Ferdinand.....	61	70
KOHN, J. & J.....	16, 34, 42-44, 50	24, 44, 52-54, 60
KÖNIG, Friedrich.....	30	39
LAMM, Erich Albert.....	62	71
LASKE, Oskar.....	101-103	108-111
LÖFFLER, Bertold.....	52	62
LÖTZ WITWE.....	20, 22-27	28, 30-35
MEDIZ-PELIKAN, Emilie.....	21	29
MOSER, Koloman.....	34	44
NIEDERMOSER, Michael.....	17	25
OLBRICH, Joseph Maria.....	4	10-11
ÖSEN, Erwin Dominik.....	36	46
PECHE, Dagobert.....	65	74
PFEIFFER & LÖWENSTEIN.....	53	63
POHL, Fritz.....	49	59
PORTOIS & FIX.....	8, 33	15, 43
POWOLNY, Michael.....	51	61
PRAG-RUDNIKER, Korbwarenfabrik Vienna.....	2	7
PRUTSCHER, Otto.....	45, 48	55, 58
SCHMIDT, Friedrich Otto.....	31.1-31.2, 32	40-42
SCHOOL OF JOSEPH MARIA OLBRICH.....	17	25
SCHOOL OF PROF. JOSEF HOFFMANN.....	39	49
SNISCHEK, Max.....	75	83
STAUDACHER, Hans.....	105	112
STÖHR, Ernst.....	29	38
STURM, Alexander.....	14-15	22-23
THONET.....	35, 45	45, 55
VAN DE VELDE, Henry.....	27	35
VEITH, Eduard.....	9.1-9.2	16-17
VON ZÜLOW, Franz.....	99-100	106-107
WERKSTÄTTE HAGENAUER.....	80-98	88-105
WERKSTÄTTEN KARAU.....	49	59
WIENER MÖBELMANUFAKTUR.....	39	49
WIENER WERKSTÄTTE.....	54, 63-65, 67-77	64, 65, 72-74, 76-85



## 20 HERBSTSALON / 20TH HERBSTSALON

Kunstkauf ist ein Akt der Lebensfreude.

Ehemaliges Motto der Wiener Kunst- und Antiquitätenmesse Hofburg

Es hat mich sehr überrascht, dass unser traditioneller Herbstsalon diesmal wahrhaftig schon zum zwanzigsten Male stattfindet und somit eine solide, langjährige Tradition in sich trägt. Die große Freude an meinem Beruf gibt mir Halt und Ausdauer. Die Begeisterung, das Feuer in mir für die Kunst, die Künstler, die Handwerker, die Unternehmer und die Fabrikanten sowie die Historie aus der Zeit des Wiener Jugendstils, aber auch aus der Zwischenkriegszeit und der Nachkriegszeit sind meine täglichen Begleiter. Immer gilt es etwas Neues zu entdecken – und etwas Altes wieder zu entdecken.

So habe ich in dieser Tradition wieder eine Kollektion an erfreulichen Kunstgegenständen für diesen Jubiläumskatalog zusammengestellt.

Teilen sie meine Freude!

Lassen sie sich diese Freude aber nicht von Menschen nehmen, die den mühsamen, durch viele Sozial-, Bildungs- und Justiz-Reformen ermöglichten Aufstieg Österreichs zu einem der wohlhabendsten Länder dieser Erde schlechtreden.

*Buying art is an act of joie de vivre.*

*Former motto of the Vienna Art and Antique Fair Hofburg*

*I was surprised when I realised that this year marks the twentieth anniversary of our traditional Herbstsalon, which has indeed become a well-established tradition.*

*The great pleasure and joy I experience in my day-to-day work and my love of my profession continue to inspire me, feeding my energy and dedication. My ardour, the fascination and the enthusiasm I feel for the arts, artists, artisans, entrepreneurs and manufacturers as well as the period and its history, the time in which the Wiener Jugendstil, the Viennese Art Nouveau, emerged and flourished, but also the inter-war years and the post-war period have become very much part of my daily life. There is always something new waiting to be discovered while re-discovering the old and well-known.*

*In line with this tradition, I have thus again put together a collection of most pleasant and pleasing objects of art for this rather special Herbstsalon anniversary edition.*

*Let me thus invite you to share my joy with me!*

*And don't let this joy in any way be tarnished by people who may be disparaging about Austria's arduous rise to one of the most prosperous countries in this world, made possible thanks to a large number of social, educational and judicial reforms and its people's hard work.*

Ihr / Yours faithfully

Wolfgang Bauer

*Wolfgang Bauer*



**RAOUL FRANK**

Linz 1867 – 1939 Oberalm near Salzburg

1. STEAMBOAT ON A CALM SEA

Signed on lower left: RAOUL FRANK

Oil on cardboard, cleaned, newly framed, excellent condition

Picture size: H 34.5 cm, W 44 cm

Frame size: H 41.5 cm, W 51 cm

Provenance: private property, Germany



**PRAG-RUDNIKER KORBFABRIKATION WIEN**

2. BEACH CHAIR

**Designed and executed by:** Prag-Rudniker Korbfabrikation Wien, modell no. 34, inv. no. H 3314

**Marked:** Prag-Rudniker Korbfabrikation WIEN, VI. Mariahilferstrasse No 1a

Wickerwork, very good original condition

H 199 cm, W (bottom) 80 cm, W (centre) 58 cm, D 65 cm

Provenance: private property, Germany

Ref.: A contemporary photograph is preserved in the Wiener Werkstätte archives at the Austrian Museum of Applied Arts (MAK), Vienna, inv. no. H 3314, <https://blog.mak.at/stuhl-oder-sessel-semotan-sagt-strandkorb/>



**MAX KAHRER**  
Timisoara (Romania) 1878 – 1937 Klosterneuburg (near Vienna)

3.1. DANUBE IN THE MORNING SUN

Signed and dated on lower right: M. KAHRER 1919  
Inscription on stretcher frame : "Donauarm in der Morgensonne" and "Max Kahrer Klosterneuburg Burgstr. 1"  
Oil on canvas, cleaned, several very small retouches, newly varnished and framed, very good condition  
Picture size: H 62 cm, W 80 cm; Frame size: H 71 cm, W 89 cm

Provenance: private property, Germany



**MAX KAHRER**  
Timisoara (Romania) 1878 – 1937 Klosterneuburg (near Vienna)

3.2. RIVERSCAPE

Signed on lower left: M. Kahrer

Watercolour and gouache on paper, cleaned, newly framed, very good condition  
Picture size: H 55 cm, W 66 cm; Frame size: H 68 cm, W 79 cm

Provenance: private property, Austria



**JOSEPH MARIA OLBRICH**  
Troppau 1867 – 1908 Düsseldorf  
**CLARFELD & SPRINGMEYER**

4.1. 150-PIECE SET OF SILVER PLATED CUTLERY IN A CANTEEN  
from the "2000" cutlery design series

**Designed by:** Joseph Maria Olbrich, 1901  
**Executed by:** Clarfeld & Springmeyer, Hemer in Westphalia  
**Marked:** artist's signet as part of the décor on every piece, company mark for Clarfeld & Springmeyer, 90 GRAMM

Alpacca silver-plated, gilt, some of the silver replated, old iron blades replaced with new stainless steel blades, excellent condition  
Canteen: H 30.5 cm, W 51.5 cm, D 42 cm  
Knife: 25 cm

12 tablespoons, forks and knives, 24 dessert spoons and forks, 12 dessert knives, 12 knife rests, 12 coffee spoons, 12 teaspoons,  
12 long-drink spoons, 6 serving pieces: soup ladle, 2 gravy ladles, 2 vegetable serving spoons and 1 rice serving spoon

4.2. 24-PIECE SET OF CUTLERY FOR 8 PERSONS, 62 ADDITIONAL PIECES

8 tablespoons, knives and forks, 6 knife rests, 14 coffee spoons, 6 fruit knives and forks, 10 dessert knives and forks, 2 cake servers, cake knife,  
pâté server, ice sickle, sugar tongs, sausage fork, 2 soup ladles, potato spoon

Provenance: various private owners, Germany

Ref.: Sanger, Das deutsche Silber-Besteck, Stuttgart 1991, p. 176 f.; A. May (ed.), Joseph M. Olbrich, 1867 – 1908 Das Werk des Architekten, exhibition catalogue,  
Hessisches Landesmuseum Darmstadt 1967, p. 152 ff





**GUSTAV GURSCHNER**  
Mühlendorf (Bavaria) 1873 – 1971 Vienna  
**K. K. KUNSTERZGIESSEREI**

5. CANDLESTICK

Designed by: Gustav Gurschner, Vienna, 1898  
Marked: GURSCHNER, DEPOSÉ  
Bronze, original patina, very good original condition  
H 28 cm

Provenance: private property, Austria

Ref.: G. Gurschner, catalogue raisonné, mod. no. 37, GG-1898011

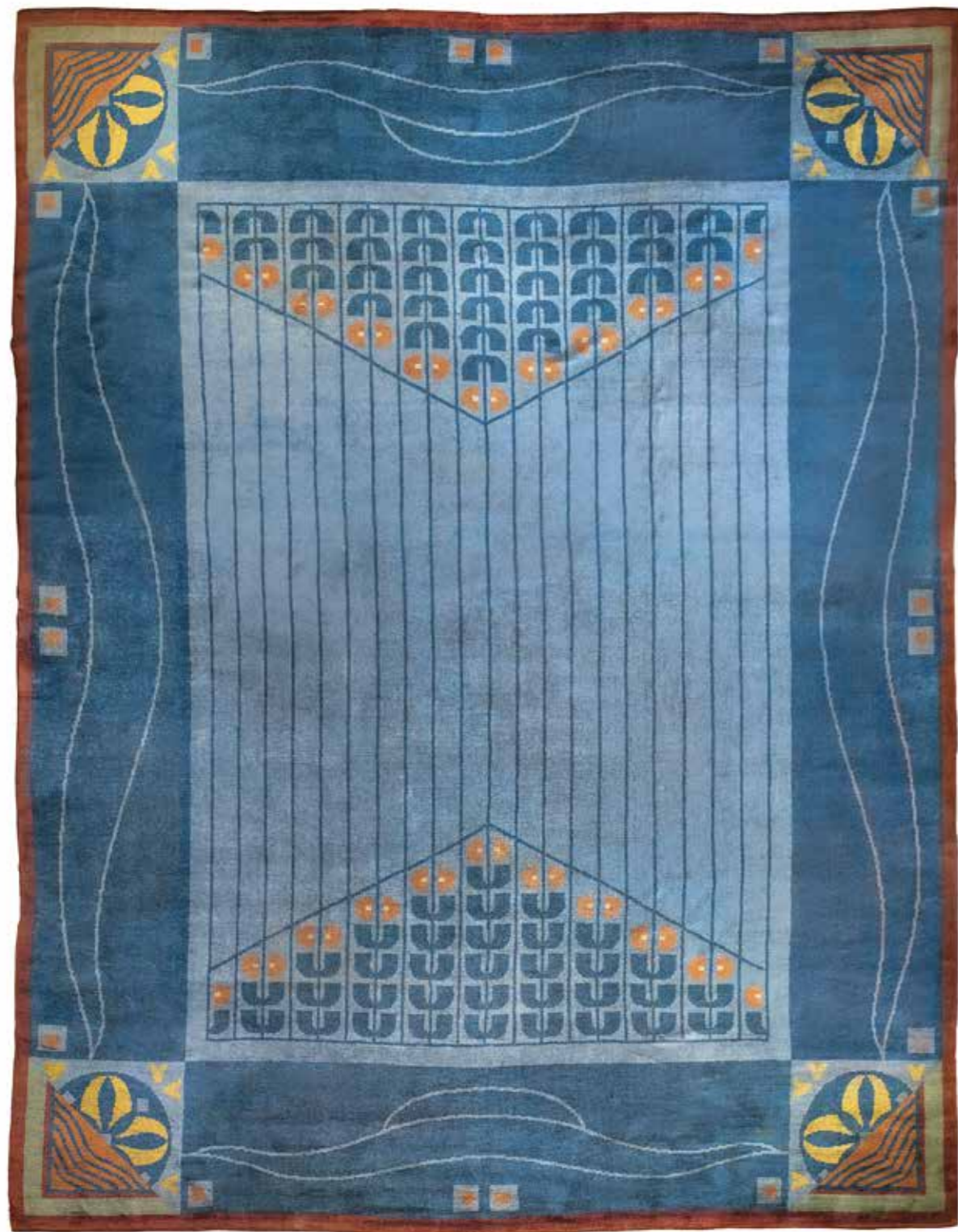


6. TABLE LAMP

Designed and executed: Vienna, around 1900

Bronze, very nice patina, newly rewired, very good original condition  
H 52 cm

Provenance: private property, USA



7. ART NOUVEAU CARPET

Designed and executed: Vienna, around 1903

Wool knotted, stylised art nouveau floral pattern, wefts repaired, pile wool in very good original condition

510 x 400 cm

Art nouveau carpets are very rare. Most of these carpets were either disposed of or are much worn. Considering its very modern design and its very good condition, this carpet is indeed an important museum-quality collector's item.

Provenance: private property, Austria



ROBERT FIX  
PORTOIS & FIX

8. SIDEBOARD "MODELL LONDON"

Designed by: Robert Fix, Vienna, 1900

Executed by: Portoís & Fix

Marked: on the locks: Portoís & Fix, Wien 9060 H

Solid Macassar ebony and veneer, geometrical inlay, surface professionally repolished, copper fittings stove enamelled, marble top, excellent condition  
H 88 cm, W 124 cm, D 62 cm

Provenance: private property, UK

Ref.: Kunst und Kunsthandwerk 1901, p. 10; 1902, pp. 185, 369 (London); pp. 412-414 (Turin);  
Vittorio Pica: L'Arte Decorativa all'Esposizione di Torino del 1902, Bergamo 1903, p. 177



**EDUARD VEITH**  
Neufitschein 1856 – 1925 Vienna

9.1. SALOME

Signed on upper right: E. VEITH  
On the reverse: paper label: "Salome", Ed. Veith

Oil on wood, cleaned, newly varnished, original frame, very good condition  
Picture size: H 30 cm, W 21cm; Frame size: H 46 cm, W 40.5 cm

Provenance: private property, Austria



**EDUARD VEITH**  
Neufitschein 1856 – 1925 Vienna

9.2. PORTRAIT

Signed: E. VEITH

Oil on wood, cleaned, newly varnished, framed, very good condition  
Picture size: H 18.5 cm, W 13 cm; Frame size: H 25.5 cm, W 25.5 cm

Provenance: private property, Austria





10. FIVE-BULB MISTLETOE CHANDELIER

Designed and executed: Vienna, around 1900

Brass and bronze, green patinated, opal glass beads, newly rewired, very nice original condition  
H 88 cm, Ø 55 cm

Provenance: private property, France



JOSEPH MARIA OLBRICH attr.

Troppau 1867 – 1908 Düsseldorf

11. DRAWING ROOM TABLE

Designed by: Josef Maria Olbrich attr.

Executed: Vienna, around 1900

Mahogany solid and veneer, stained, surface cleaned and slightly repolished, retouches, top professionally repolished, brass fittings, cut and faceted glass, original marble top restored, very nice original condition  
Excellent Viennese craftsmanship  
H 70 cm, W 65 cm, D 65 cm

Provenance: private property, Austria



**JOSEF HOFFMANN attr.**  
Brtnice 1870 – 1956 Vienna

**12. TABLE WITH TWO FOLDING EXTENSIONS**

Designed and executed: Vienna, around 1900

Solid oak and veneer, stylised floral carvings, dyed, surface cleaned and slightly repolished, two small replacements on table-top veneer, retouches, very nice original condition  
H 71 cm, W 145/225 cm, D 60 cm

Provenance: Ilse Knirsch (Falnbigl), Gloriettegasse 8, 1130 Vienna, by descent



**13. BAT CLOCK**

Designed and executed: Germany, around 1900

Solid oak, dial and pendulum in chased copper, 8-day movement with half-hour strike on mounted spring steel gong, movement overhauled by an expert clockmaker, one case cover replaced, very good original condition  
H 56 cm, W 37 cm, D 11.5 cm

Provenance: private property, Germany



**ALEXANDER STURM**

14. SILVER FRUIT BASKET

Designed and executed by: Alexander Sturm, around 1900

Marked: four-leaf clover (company's mark for Alexander Sturm), Austrian hallmark - head of Diana (A for Vienna)

Silver, chased, inside gilt, on the side engraving in Hebrew "For my daughter Zilah from your father 1901(02?)", very nice original condition

H 18 cm, W 26 cm, D 12.5 cm

Provenance: private property, Germany



**ALEXANDER STURM**

15. FIVE-PIECE SMOKING SET

consisting of: tray, 2 ashtrays, cigarette tray, cigar tray

Designed and executed by: Alexander Sturm, Vienna, around 1905

Marked: four-leaf clover (company's mark for Alexander Sturm), Austrian hallmark - head of Diana (A for Vienna, 3 for 800/1000), 25368 (tray), 25344, 25346, 25347, 25349

Silver, chased and polished, very good original condition

Tray: equilateral triangle: L 28 cm

Provenance: private property, Germany



**JACOB & JOSEF KOHN**

16. COAT AND HAT RACK

Designed and executed by: J. & J. Kohn, model no. 1080/1, Vienna, around 1910

Marked: paper label J. & J. Kohn

Bent beech and plywood, dyed to rosewood, some retouches, surface professionally repolished, 3 mirrors renewed, 4 nickel-plated iron hooks, 2 trays replaced, 1 skirting strip replaced, excellent condition  
H 204 cm, W 116 cm, D 28 cm

Provenance: private property, Austria

Ref.: sales catalogue J. & J. Kohn, 1916, p. 85



**JOSEF MARIA OLBRICH attr.  
MICHAEL NIEDERMOSER**

17. ONE ARMCHAIR AND FIVE CHAIRS

Designed by: Josef Maria Olbrich attr., Vienna, around 1900

Executed by: Michael Niedermoser

Solid walnut, carved stylised flower decoration, retouches, surface cleaned and slightly repolished, copper fittings, original leather upholstery, very nice original condition

H 95 cm, SH 45 cm, W 48 cm, D 48 cm

The carvings are strongly reminiscent of Josef Maria Olbrich's design for the foreword to the second annual issue of Ver Sacrum II, 1899, and of the floral décor of Villa Friedmann in Hinterbrühl.

Provenance: private property, Austria

Ref.: comp. Hevesi, Ideen von Olbrich, pp. 32 and 38; comp. A. May (ed.), Joseph M. Olbrich, 1867 – 1908 Das Werk des Architekten, exhibition catalogue, Hessisches Landesmuseum Darmstadt 1967, p. 44



**WILHELM BERNATZIK**  
Mistelbach 1853 – 1906 Hinterbrühl

18. NEAR HINTERBRÜHL IN THE VIENNA WOODS

Inscribed on reverse: Wilhelm Bernatzik 1853 – 1906, bei Hinterbrühl im Wiener Wald  
Oil on canvas, cleaned, newly varnished, original frame, excellent condition  
Picture size: H 45 cm, W 55 cm; Frame size: H 48 cm, W 57.5 cm

Provenance: private property, Austria



**WILHELM BERNATZIK**  
Mistelbach 1853 – 1906 Hinterbrühl

19. AUTUMN CROCUS

Inscribed on reverse: Wilhelm Bernatzik 1853 – 1906, Herbstzeitlose  
Oil on canvas, cleaned, newly varnished, original frame, excellent condition  
Picture size: H 45 cm, W 55 cm; Frame size: H 46.5 cm, W 56.5 cm

The painting was offered for sale in the estate auction of Wilhelm Bernatzik on 17 February 1907 in Galerie Miethke, Dorotheergasse 11 and Graben 17 under catalogue number 95.

Provenance: family property, fam. Marx, Gaaden near Vienna

Ref.: exhibition catalogue of Galerie Miethke, 17 February 1907, Wilhelm Bernatzik, 1853 – 1906, p. 19 no. 95





## LÖTZ WITWE

20. VASE

Executed by: Lötzwitwe, Klostermühle, around 1902  
Décor: Argus (PG 2/351)

Transparent glass, irregular silver-blue splashes and threads, multi-colour iridescent, excellent original condition  
H 35 cm

Provenance: private property, USA



## EMILIE MEDIZ-PELIKAN

Vöcklabruck 1861 - 1908 Leubnitz-Neuostra bei Dresden

21. STEIN AN DER DONAU IN WINTER 1893

Oil on wood, cleaned, newly varnished and framed, excellent condition  
Picture size: H 17.5 cm, W 29.5 cm; Frame size: H 25.5 cm, W 37 cm

Provenance: private property, Germany

Ref.: included in the provisional catalogue raisonné under no. 403; comp. exhibition catalogue 'Emilie Mediz-Pelikan - Karl Mediz', University of Applied Arts Vienna, Upper Austrian State Museum Linz, 1986, no. 217



## LÖTZ WITWE

22. VASE

Executed by: Lötz Witwe, Klostermühle, 1903

Décor: Phaenomen Genre 3/430

Incorrectly signed: QUEZAL

Transparent glass, irregular silver-blue splashes and threads, multi-colour iridescent, excellent original condition  
H 12.5 cm

Provenance: private property, USA



## LÖTZ WITWE

23. VASE

Executed by: Lötz Witwe, Klostermühle, around 1902

Décor: Argus maron (Phaenomen Gre 2/351)

Transparent glass, irregular silver-blue splashes and threads, multi-colour iridescent, excellent original condition  
H 16.5 cm

Provenance: private property, USA

Ref.: comp. H. Ricke (ed.), Lötz, Böhmisches Glas 1880–1940, Munich, 1989, vol. 1, p. 328 (shape)



## LÖTZ WITWE

### 24. VASE TITANIA

Executed by: Lötz Witwe, Klostermühle, around 1900  
 Décor: Titania May-green with pink, Gre 2534  
 Shape: 1900, prod. no. 761

Vase with Titania décor in May-green and pink on transparent ground, excellent original condition  
 H 10.5 cm

Provenance: private property, USA

Ref.: H. Ricke (ed.), Lötz, Böhmisches Glas 1880–1940, Munich, 1989, vol. 2, p. 115 (paper pattern); <https://loetz.com/decor-a-z/titania/titania/titania-gre-2534> (accessed May 28, 2019)



## LEOPOLD BAUER Jägerndorf 1872 – 1938 Vienna LÖTZ WITWE KLOSTERMÜHLE

### 25. A PAIR OF CUBE VASES

Designed by: Leopold Bauer, 1906  
 Executed by: Lötz Witwe, Klostermühle, prod. no. 4277  
 Décor: cobalt Papillon, 1898  
 Shape: 4277

Cobalt blue glass, moulded  
 2 chips on the rim, 1 fleabite chip on the rim  
 H 10 cm, W 10 cm, D 10 cm

Provenance: private property, Austria

Ref.: H. Ricke (ed.), Lötz, Böhmisches Glas 1880–1940, Munich, 1989, vol. 1, p. 328; vol. 2, p. 174 (paper pattern)



## LÖTZ WITWE

26. VASE

**Executed by:** Lötzwitwe, Klostermühle, 1901  
**Décor:** Phaenomen Genres PG 1/158  
**Marked:** Loetz Austria

Transparent glass, metallic-yellow ground, veined and irregularly pulled, excellent original condition  
H 13 cm

Provenance: private property, USA



## HENRY VAN DE VELDE Antwerp 1863 – 1957 Zurich LÖTZ WITWE

27. VASE WITH SILVER MOUNT

**Designed by:** Henry van de Velde, 1898  
**Glass executed by:** Lötzwitwe, Klostermühle, for La Maison Moderne  
**Décor:** Candia Papillon  
**Mount marked:** MML (La Maison Moderne), master's mark AD with swan (Alphonse Debain)

Candia ground with thickly applied silvery-yellow powder, excellent original condition  
H 14 cm

Provenance: private property, England

Ref.: Victor Arwas, Glass - Art Nouveau to Art Deco, Academy Editions, London, 1977, p.146





**EDUARD KASPARIDES**  
Krenov 1858 – 1926 Bad Gleichenberg

28.1. MÜRZSTEG HUNTING LODGE

Signed on lower right: ED. KASPARIDES  
Oil on cardboard, cleaned and varnished, newly framed, excellent condition  
Picture size: H 56 cm, W 63.5 cm; Frame size: H 64.5 cm, W 72 cm

The Mürzsteg hunting lodge is the summer residence of the Austrian federal president.

Provenance: private property, Austria

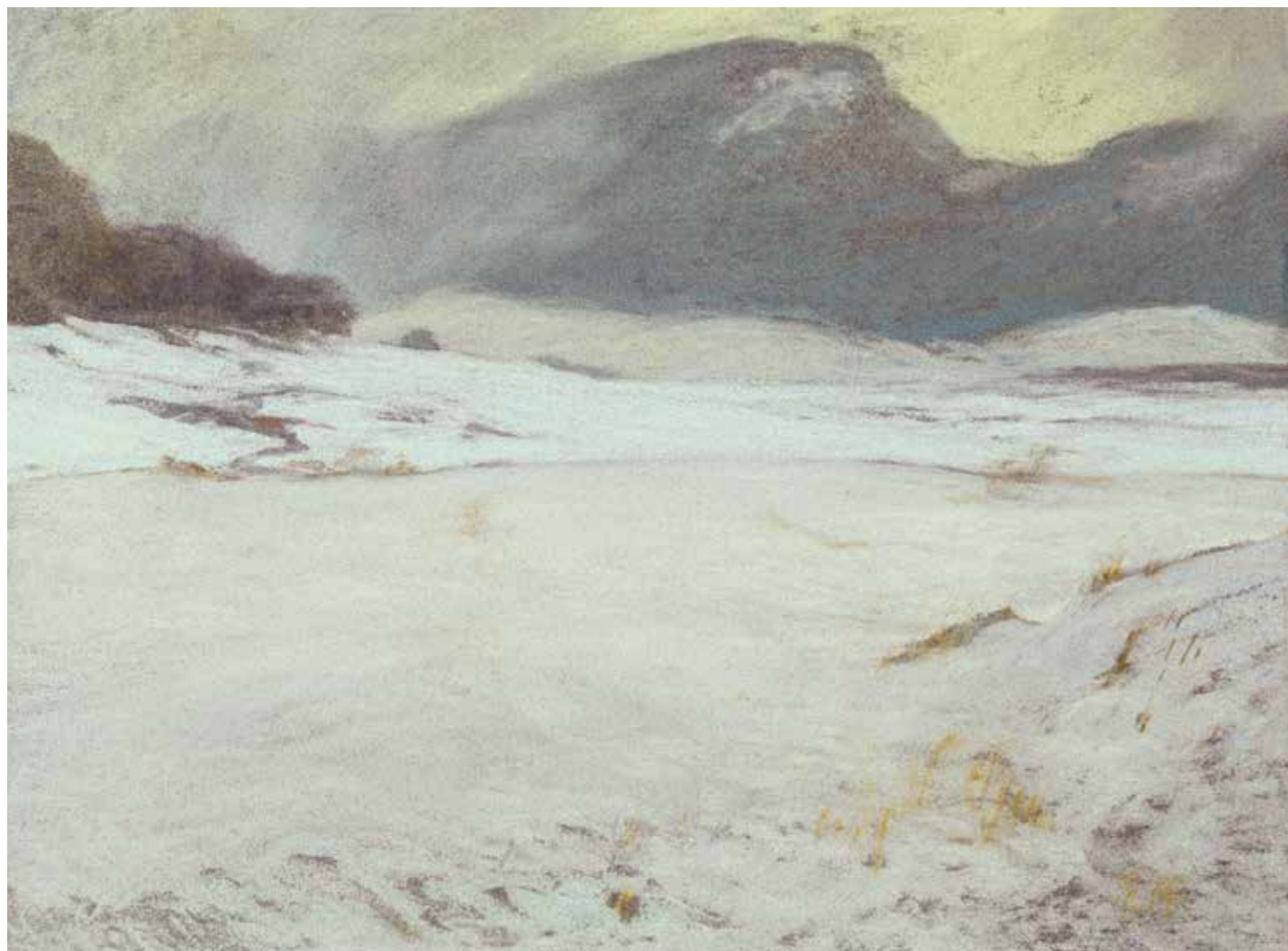


**EDUARD KASPARIDES**  
Krenov 1858 – 1926 Bad Gleichenberg

28.2. RIVERSCAPE

Signed and dated on lower right: ED. KASPARIDES, WIEN 1932  
Oil on cardboard, cleaned and varnished, newly framed, excellent condition  
Picture size: H 88 cm, W 114 cm; Frame size: H 96 cm, W 122 cm

Provenance: private property, USA



**ERNST STÖHR**  
1860 – St. Pölten – 1917

29. SNOWFIELD

Monogrammed on lower right: E. St.  
Pastel on cardboard, fixed, newly framed, very good condition  
Picture size: H 29.5 cm, W 40 cm; Frame size: H 34 cm, W 44.5 cm

Provenance: private property, Austria



**FRIEDRICH KÖNIG**  
1857 – Vienna – 1941

30. RIVERSCAPE

Signed on lower left: FRIEDRICH KÖNIG  
Oil on canvas, cleaned, newly varnished, several retouches, old frame partly damaged, painting in excellent condition  
Picture size: H 67 cm, W 101 cm; Frame size: H 74 cm, W 107 cm

Provenance: private property, Austria



### FRIEDRICH OTTO SCHMIDT

#### 31.1. FOUR ARMCHAIRS

**Designed and executed by:** F. O. Schmidt, Vienna, around 1900

**Marked:** 2205 (metal plaque)

Solid rosewood, surface professionally repolished, polished brass cuffs, upholstery and fabric renewed, excellent condition  
First-class Viennese cabinet-making  
H 80 cm, SH 45 cm, W 55 cm, D 61 cm

Provenance: private property, Germany



### FRIEDRICH OTTO SCHMIDT

#### 31.2. TABLE À LA LOOS

**Executed by:** Friedrich Otto Schmidt, Vienna, around 1905, model no. 669

Mahogany veneer, legs of solid mahogany, dyed to dark mahogany, surface professionally repolished, brass fittings stove enamelled, 2 replaced, excellent condition  
H 70 cm, top: Ø 77 cm, base: Ø 55 cm

A contemporary photograph showing an identical table as model number 699 is preserved in the Friedrich Otto Schmidt company archives. Sincere thanks to Klaus Lorenz from the Friedrich Otto Schmidt company in Vienna for providing us with the documentation.

Provenance: private property, Germany

Ref.: F. O. Schmidt archives, ill. no. 669





**FRIEDRICH OTTO SCHMIDT**

32. TABLE À LA LOOS

Executed by: Friedrich Otto Schmidt, Vienna, around 1905

Solid walnut and veneer, dyed to mahogany, surface professionally repolished, copper fittings stove enamelled, very good condition  
H 70 cm, W 90 cm, D 60 cm

Provenance: private property, Germany



**PORTOIS & FIX**

33. SECESSIONIST SHOWCASE

Designed by: variation of a design by Josef Hoffmann, Vienna, 1901

Executed by: Portois & Fix

Marked: on both locks: PORTOIS & FIX, WIEN, 7253 H

Mahogany wood and veneer, retouches, surface cleaned and slightly repolished, polished brass fittings, cut and faceted glass, very good original condition  
H 181 cm, W 110 cm, D 57 cm

In 1901, Josef Hoffmann designed a comparable piece which featured in the magazine "Das Interieur II". The showcase shown in the illustration is identical in form but much more richly decorated.

Provenance: private property, Austria

Ref.: Das Interieur II, 1901, ill. p. 155; M. Wenzel-Bachmayer, Vienna, 2008, Die Firma Portois & Fix, Pariser Esprit und Wiener Moderne, p. 57





**KOLOMAN MOSER**  
1868 – Vienna – 1918  
**J. & J. KOHN**

34. DRAWING ROOM TABLE

**Designed by:** Koloman Moser, Vienna, 1901  
**Executed by:** J. & J. Kohn, model no. 413 T, Vienna, from 1901 onwards  
Bent beechwood, dyed to rosewood, surface professionally repolished, linear brass inlays, some replaced, brass fittings, fabric on top replaced, very good condition  
H 71 cm, Ø 55.5 cm  
This table was first presented as part of a drawing room ensemble at the winter exhibition of the Austrian Museum of Art and Industry in 1901.

Provenance: private property, Austria

Ref.: Hohe Warte, II, 1905-06, p. 276; Italian sales catalogue J. & J. Kohn, 1906; G. Renzi, Il mobile moderno, Gebrüder Thonet Vienna, Jacob & Josef Kohn, Milan, 2008, p. 54 f



**GEBRÜDER THONET**

35. LADY'S DESK

**Designed and executed by:** Gebrüder Thonet, model no. 2, Vienna, 1904

Bent beech and plywood, mahogany veneer (table top), parts of the veneer replaced, dyed to rosewood, surface professionally repolished, brass fittings polished and stove enamelled, glass top and fabric on top replaced, very nice restored condition  
H 105 cm, H (table top) 76 cm, W 96 cm, D 65 cm  
Provenance: private property, Italy

Ref.: desk: G. Renzi, Il mobile moderno, Gebrüder Thonet Vienna, Jacob & Josef Kohn, Milan, 2008, p. 126; chair: Gebrüder Thonet sales cat., 1 Sep 1904, III, p. 119;



**ERWIN DOMINIK OSEN**

Vienna 1891 – 1970 Dortmund

36. SAINT CHARLES CHURCH IN VIENNA

Signed on lower right: Erwin Dom Osen

Oil on canvas, cleaned and varnished, several retouches, newly framed, excellent condition  
Picture size: H 70 cm, W 70 cm; Frame size: H 79 cm, W 79 cm

Provenance: private property, Austria



**37. EXTRAORDINARY ROUND EXTENDING DINING TABLE**

Designed and executed: Vienna, around 1905

Mahogany veneer on pine, solid beech and veneer, dyed to rosewood and professionally repolished, hammered brass plinth, with unusual envelope opening action, brass and iron fittings for the extension parts, excellent condition  
H 77 cm, Ø 120 cm; extendable from 120 cm to 234 cm, suitable for up to 10 persons

Round dining tables with integrated extensions are very unusual. This table has an extremely clever built-in mechanism which allows two folded extension tops to be hoisted into position using a special lifting mechanism and a vertical adjustment slide. While maintaining the table's height at 77 cm, it can thus be extended to 234 cm and offers comfortable seating for ten people.

Provenance: private collection, England



38. THREE-BULB CHANDELIER

Designed and executed: Vienna, around 1900

Brass, cast and deep-drawn, polished and stove enamelled, wiring renewed, 3 glass shades, very good condition  
First-class Viennese craftsmanship  
H 120 cm, Ø 45 cm

Provenance: private property, Germany



SCHOOL OF PROF. JOSEF HOFFMANN  
KARL WITZMANN attr.

39. SMALL SIDEBOARD

Designed by: School of Prof. Josef Hoffmann, Vienna, around 1903

Executed by: Karl Witzmann attr.

Ash veneer on pine, polished, surface cleaned and slightly repolished, white metal fittings and columns, original marble tops, cut and faceted glass, very good original condition  
First-class Viennese cabinet-making  
H 195 cm, W 100 cm, D 50 cm

Provenance: from the estate of Imperial and Royal First Lieutenant Dr. Karl Mumelter



40. EXCEPTIONAL COAT AND HAT STAND

Designed and executed: Vienna, around 1900

Brass, polished, stove-enamelled, excellent condition, excellent Viennese craftsmanship  
H 198 cm, W 46 cm, D 46 cm, on top Ø 58 cm

Provenance: private property, Austria

Ref.: comp. sales catalogue August Kitzschelt's Erben, p. 249



J. & J. HERRMANN

41. BOOKCASE

Executed by: J. & J. Herrmann, Vienna, around 1905  
Marked on the locks: 72, 1 key HERRMANN

Solid oak and veneer, interior oak wood veneer, ebonized and limed, surface professionally repolished,  
newly nickel-plated brass fittings, original cut and faceted glass, excellent condition  
Excellent Viennese craftsmanship  
H 200/146 cm, W 180 cm, D 48 cm

Provenance: private property, Austria



**JOSEF HOFFMANN**  
Brtnice 1870 – 1956 Vienna  
**J. & J. KOHN**

42. DRAWING ROOM TABLE

**Designed by:** Josef Hoffmann, Vienna, before 1906  
**Executed by:** J. & J. Kohn, Vienna, around 1906, model no. 675/T  
Bent beech and plywood, dyed to rosewood, surface professionally repolished, original hammered brass top, original base, excellent condition  
H 75 cm, Ø 59 cm

This model was shown at the Milan exhibition in April 1906 in the Visitors' Hall of the Sala della città di Trieste and at the "Kunstschau 1908" in Vienna, where Hoffmann was in charge of the interior design.

Provenance: private property, Austria

Ref.: J. & J. Kohn, sales catalogue, 1916, p. 48; Das Interieur XII, 1911, plate 31; G. Renzi, Il mobile moderno, Gebrüder Thonet Vienna, Jacob & Josef Kohn, Milan, 2008, p. 66; ill. from archives: La stanza del Re, Via Washington 2 – Milan, p. 69; ill. Deutsche Kunst und Dekoration 1908; also see documentation cat. no. 30.



**JOSEF HOFFMANN** Brtnice 1870 – 1956 Vienna **J. & J. KOHN**

43. A PAIR OF ARMCHAIRS known as "Buenos Aires" armchairs

**Designed by:** Josef Hoffmann, around 1907  
**Executed by:** J. & J. Kohn, model no. 675/F  
Bent beech and plywood, dyed to rosewood, professionally repolished, decorative brass nails, re-upholstered in very durable microfiber fabric, excellent condition  
H 76 cm, SH 42 cm, W 77 cm, D 74 cm

Provenance: private property, Austria

Ref.: Das Interieur, XII, 1911, plate 31; G. Renzi, Il mobile moderno, Gebrüder Thonet Vienna, Jacob & Josef Kohn, Milan, 2008, pp. 172 f



**JOSEF HOFFMANN  
J. & J. KOHN**

**44. NESTING TABLES WITH SQUARE LATTICEWORK**

**Designed by:** Josef Hoffmann, Vienna, around 1906  
**Executed by:** J. & J. Kohn, model no. 988

Bent beech and plywood, dyed to rosewood, professionally repolished, very good condition  
H 75 cm, W 55/60 cm, D 42.5 cm

Josef Hoffmann designed these nesting tables around 1906. The most common variant has rods on the sides. This much rarer variant boasts plywood latticework composed of three rows of squares on the sides of the largest table, thus establishing a direct design link to the "sitting machine".

Ref.: J. & J. Kohn, sales catalogue, 1916, p. 79; Das Interieur, vol. IX, 1908, p. 28; G. Renzi, Il mobile moderno, Gebrüder Thonet Vienna, Jacob & Josef Kohn, Milan, 2008, pp. 180 f



**OTTO PRUTSCHER  
1880 – Vienna – 1949  
GEBRÜDER THONET**

**45. A PAIR OF FLOWER STANDS**

**Designed by:** Otto Prutscher, Vienna, around 1910  
**Executed by:** Gebrüder Thonet, model no. 9651  
**Marked:** original paper label Gebrüder Thonet

Bent beech and plywood, 1 top replaced, dyed to rosewood, surface professionally repolished, excellent condition  
H 119 cm, Ø 34.5 cm

Provenance: private property, Austria

Ref.: J. Uhlir, Vom Wiener Stuhl zum Architektenmöbel, Vienna, 2009, p. 173



## BERNDORFER METALLWARENFABRIK

### 46. ELEGANT SEVEN-BULB CHANDELIER

Designed and executed by: Berndorfer Metallwarenfabrik, Arthur Krupp, around 1910  
Marked: BMF, L. U 70

Brass, polished and stove enamelled, cut and faceted glass panels, glass beads, cut and stone-cut glass shades, newly rewired, excellent condition

H 199 cm, height adjustable to room height

Provenance: private property, Austria



## JOHANN SEIDL

### 47. SIDEBOARD

Designed and executed by: Johann Seidl, Vienna, around 1908  
Marked on the locks: 42; key: JOH. SEIDL WIEN

Macassar ebony wood solid and veneer, geometrical carvings, maple skirting strips dyed to black; interior of drawers and base: cherry wood and veneer; interior of top: bird's eye maple veneer, retouches, surface cleaned and partially repolished, brass fittings, some repairs on original marble top, cut and optically cut crystal glass, very good original condition  
Excellent Viennese cabinet-making  
H 190 cm, W 200 cm, D 69 cm

Provenance: private property, Austria



**OTTO PRUTSCHER**  
1880 – Vienna – 1949

48. FOLDING SCREEN

Designed by: Otto Prutscher, Vienna, around 1915

Beech and bent beech, elaborate sculptural carvings, dyed to black, surface cleaned and slightly repolished, nickel-plated iron fittings, very good original condition  
H 140 cm, W 135 cm

Provenance: private property, Czech Republic



**FRITZ POHL**  
**WERKSTÄTTEN KARAU**

49. BIG CENTREPIECE

Designed by: Fritz Pohl  
Executed by: Werkstätten Karau, Vienna, around 1920, model no. 514  
Marked: Karau, AUSTRIA, 514, F. Pohl

Ceramic, relief-structure, multi-colour glazed, a few very small flea bites, very good original condition  
H 19 cm, B 20 cm, L 31 cm

Provenance: private property, Austria





**JOSEF HOFFMANN attr.**  
**J. & J. KOHN**

50. FLOWER STAND

Designed by: Josef Hoffmann attr., Vienna, around 1905  
Executed by: J. & J. Kohn  
Marked: remains of original paper label: "J. & J. Kohn, Wien"

Beech and bent beechwood, dyed to rosewood, surface professionally repolished, excellent condition  
H 99 cm, Ø 30 cm

Provenance: private property, Austria



**MICHAEL POWOLNY** Judenburg 1871 – 1954 Vienna **WIENER KERAMIK**

51. RELIEF: PUTTO WITH FLOWERS

Designed by: Michael Powolny, around 1912, cat. raisonné 151  
Executed by: Wiener Keramik, around 1912, model no. 431  
Marked: GK, 431

Brown clay, multi-coloured decoration, glazed, excellent original condition  
H 34 cm, W 16 cm

Provenance: private property, England

Ref.: E. Frottier, Michael Powolny, Keramik und Glas aus Wien 1900–1950, cat. raisonné 151



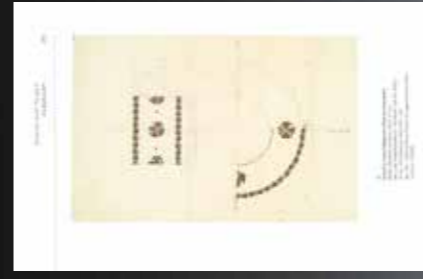
**BERTOLD LÖFFLER**  
 Niederrosenthal near Reichenberg (Bohemia) 1874 – 1960 Vienna  
**VEREINIGTE WIENER UND GMUNDNER KERAMIK**

52. VASE

Designed by: Bertold Löffler, Vienna, around 1906  
 Executed by: Vereinigte Wiener und Gmundner Keramik, model no. 107  
 Marked: WK, GK, 107

Ceramic, relief-structure, grey clay, multi-colour glazed, 2 chips on stand, very good original condition  
 H 9 cm, W 8.5 cm, D 10 cm

Provenance: private property, Austria



**JOSEF HOFFMANN/EMANUEL JOSEF MARGOLD** Brtnice 1870 – 1956 Vienna/ Vienna 1888 – 1962 Bratislava **PFEIFFER & LÖWENSTEIN**

53. MOCHA SERVICE "MERKUR" consisting of: 6 cups, 6 saucers, mocha pot, sugar bowl, 1 lid

Designed by: Josef Hoffmann, around 1910  
 Décor: Emanuel Josef Margold, around 1910  
 Executed by: Pfeiffer & Löwenstein, Schlackenwerth  
 Marked: company marks, 2 saucers with sales mark, "Josef Böck, Wien"  
 Ceramic, yellow-white glazed, gold painted, nice original condition  
 Pot: H 18 cm

Provenance: private property, Austria

Ref.: W. Neuwirth, Wiener Keramik, Braunschweig 1974, p. 163, ill. 94, p. 145; comp. R. Ulmer (ed.) Wiener Moderne, Künstlerkolonie Darmstadt, exhibition catalogue, Darmstadt 2004, p. 79



**BERTOLD LÖFFLER (ED.)**  
 Nieder-Rosenthal near Reichenberg (Bohemia) 1874 – 1960 Vienna

54. DIE FLÄCHE

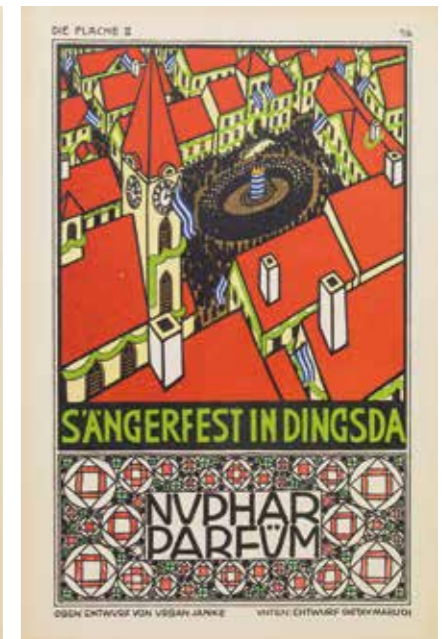
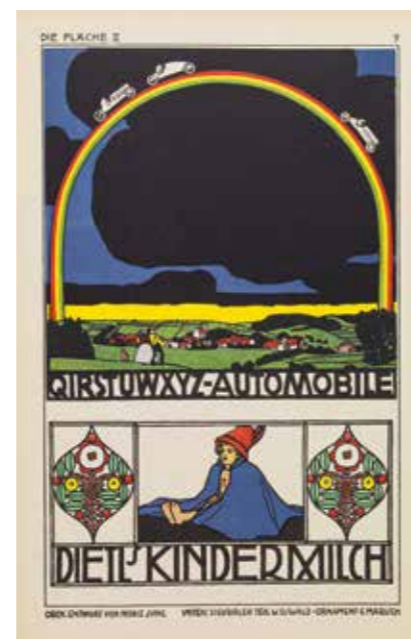
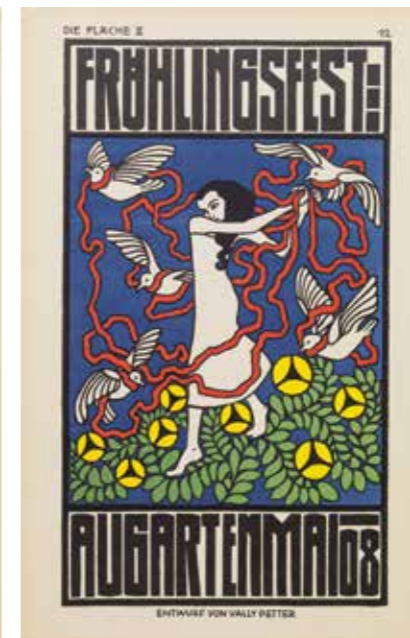
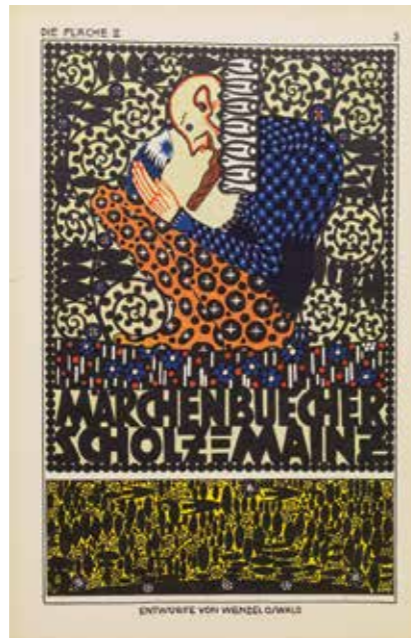
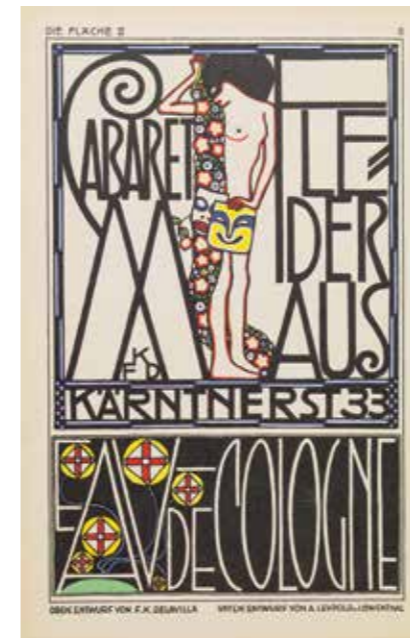
16 poster designs, school of Bertold Löffler  
 Dekorative Entwürfe. Neue Folge Band 2, Heft 1, Wien 1910

Colour lithographs on cardboard

Graphic designs in booklet by: Bertold Löffler, Wenzel Oswald, Gustav Marisch, Moriz Jung, F. K. Delavilla, A. Leupold v. Löwenthal, Urban Janke, Karl Schwetz, Josef v. Diveky, Vally Petter, Berta Kiesewetter

H 31 cm, B 20 cm

Provenance: private property, USA





**GLASFACHSCHULE HAIDA**

55. LIDDED GLASS JAR

**Designed by:** K.K. Fachschule Haida, around 1916  
**Executed by:** Joh. Oertel & Co., Haida

Crystal glass, multi-colour painted, mint condition  
 H 14.5 cm

Provenance: private property, Germany

**GLASFACHSCHULE HAIDA**

56. LIDDED GOBLET

**Designed by:** K.K. Fachschule Haida, around 1916  
**Executed by:** Joh. Oertel & Co., Haida

Crystal glass, multi-colour painted, mint condition  
 H 26.5 cm

Provenance: private property, Germany



**ADOLF BECKERT** Böhmisch Leipa 1884 – 1929 Steinschönau  
**GLASFACHSCHULE STEINSCHÖNAU**

57. CENTREPIECE

**Designed by:** Adolf Beckert  
**Executed by:** Glasfachschule Steinschönau for Friedrich Pietsch, around 1915  
 Crystal glass, black stain and gold painting, mint condition  
 H 12 cm, Ø 20 cm

Provenance: private property, Germany

Ref.: T. Bröhan, Glaskunst der Moderne, ill. 78 ff



**ADOLF BECKERT** Böhmisch Leipa 1884 – 1929 Steinschönau  
**GLASFACHSCHULE STEINSCHÖNAU**

58. LIDDED BOX

**Designed by:** Adolf Beckert  
**Executed by:** Glasfachschule Steinschönau for Friedrich Pietsch, around 1915  
 Transparent glass, cut, black stain and gold painting, excellent condition  
 H 14 cm, Ø 14 cm

Provenance: private property, Germany

Ref.: Deutsche Kunst und Dekoration, XXXVIII, 1916, p. 275; T. Bröhan, Glaskunst der Moderne, ill. 82 (identical)



**ERNST HUBER**  
1895 – Vienna – 1960

59. SUNSET

Signed and dated on lower right: E. HUBER (19)22

Oil on cardboard, cleaned and varnished, newly framed, very good condition  
Picture size: H 35 cm, W 44 cm; Frame size: H 46 cm, W 56cm

Provenance: private property, Austria



**ERNST HUBER**  
1895 – Vienna – 1960

60. SUNDAY OUTING

Signed on bottom left: E. Huber; On the reverse: paper label: Nr. V, E. Huber, Wald mit Figuren mit Rahmen, K 3.000.000,- – 1.800.000 K Ölg.

Oil on canvas, retouches on the sky and on the forest floor, cleaned, newly varnished and framed, very good condition  
Picture size: H 56cm, W 76.5cm; Frame size: H 69 cm, W 90 cm

Provenance: private property, Austria



**FERDINAND KITT**  
1887 – Vienna – 1961

61. LANDSCAPE

Signed and dated: F. Kitt 1924

Oil on cardboard, cleaned and varnished, newly framed, excellent condition  
Picture size: H 42 cm, W 52 cm; Frame size: H 54.5 cm, W 64.5 cm

Provenance: private property, Austria



**ERICH ALBERT LAMM**  
Vienna 1880 – 1934 Stockholm

62. LOOKING DREAMILY DOWN AT LAKE TRAUNSEE

Signed on lower left: ERICH LAMM

Oil on canvas, cleaned, small paint flakes replaced and fixed, newly varnished and framed, very good condition  
Picture size: H 50 cm, W 50 cm; Frame size: H 55 cm, W 55 cm

Provenance: private property, England



**JOSEF HOFFMANN** Brtnice 1870 – 1956 Vienna **WIENER WERKSTÄTTE**

63. TANTALUS WITH SILVER CLASP

**Designed by:** Josef Hoffmann  
**Executed by:** Wiener Werkstätte, 1909, model no. S 1298  
**Marked:** JH, WW, rose mark, Austrian hallmark - head of Diana (A for Vienna, 2 for 900/1000), AW in circle (master's mark of Adolf Wertnik)

Crystal glass, stone-cut, ground glass stopper, chip on stand, silver, fine bead-and-reel decoration, lock missing, very good condition  
H 31 cm  
Three such carafes were produced in 1909.

Sincere thanks to Dr. Elisabeth Schmuttermeier for this information.

Provenance: private collection, Austria



**JOSEF HOFFMANN** Brtnice 1870 – 1956 Vienna **WIENER WERKSTÄTTE**

64. INKWELL

**Designed by:** Josef Hoffmann, around 1908  
**Executed by:** Wiener Werkstätte, comp. model no. S 1236  
**Marked:** WW, Austrian hallmark - head of Diana (A for Vienna, 2 for 900/1000)

Silver, bead-and-reel decoration, rose pattern, glass liner, very nice original condition  
H 5 cm, Ø 8 cm

Provenance: private property, Italy

Ref.: comp. Wiener Werkstätte archives at the Museum of Applied Arts, Vienna, design drawing inv. no. KI-12069-2\_1



**DAGOBERT PECHE** attr. St. Michael im Lungau 1887 – 1923 Vienna **WIENER WERKSTÄTTE**

65. PILLBOX

**Designed by:** Dagobert Peche attr., around 1919

**Executed by:** Wiener Werkstätte

**Marked:** WW, Austrian hallmark - head of Diana (A for Vienna, 2 for 900/1000)

Silver, gilt inside, chased décor, lid with moss agate, very good original condition  
H 3 cm, L 3.5 cm, W 3 cm

Provenance: private property, Germany



**NORBERTINE BRESSLERN-ROTH** 1891 – Graz – 1978 **RUDOLF SOUVAL**

66. SILVER BOX WITH PORTRAIT MINIATURE ON IVORY

**Designed and executed by:** Norbertine Bresslern-Roth (portrait miniature), Rudolf Souval (silver box), around 1925

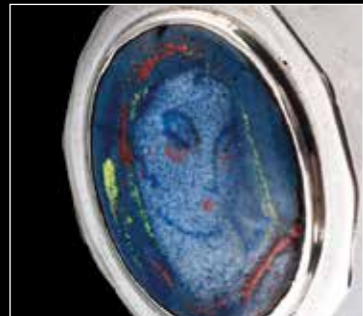
**Signed:** on ivory: N.B.-Roth

**Marked:** maker's mark RS (Rudolf Souval), Austrian hallmark – head of hoopoe (W for Vienna, 1 for 935/1000), 935

Silver, gilt inside, miniature painting on ivory, excellent original condition  
H 3 cm, W 9 cm, D 7 cm

Provenance: private property, England





**JOSEF HOFFMANN**  
Brtnice 1870 – 1956 Vienna  
**WIENER WERKSTÄTTE**

67. SMALL PILLBOX

**Designed by:** Josef Hoffmann, Vienna, around 1920  
**Executed by:** Wiener Werkstätte, model no. S 5444  
**Marked:** JH, MADE IN AUSTRIA (3 lines), WIENER WERK STÄTTE (3 lines), 900, the symbols of Mercury (official Austrian export mark)

Silver, enamel inlay, very good condition  
H 4 cm, W 3.5 cm, D 4 cm

Provenance: private property, France

Ref.: A contemporary photograph is preserved in the Wiener Werkstätte archives at the Austrian Museum of Applied Arts (MAK), Vienna, inv. no. WWF 96-197-6

**JOSEF HOFFMANN**  
Brtnice 1870 – 1956 Vienna  
**WIENER WERKSTÄTTE**

68. MEDAILLION

**Designed by:** Josef Hoffmann, around 1918  
**Executed by:** Wiener Werkstätte, model no. S 4090  
**Marked:** 900, WIENER WERK STÄTTE (3 lines), WW

Silver chased, concealed hinge, malachite, very good condition  
**4 x 3 cm**  
According to records kept in the Wiener Werkstätte archives five pieces were executed.

Provenance: private property, Austria

Ref.: Wiener Werkstätte archives at the Museum of Applied Arts, Vienna, design drawing inv. no. KI 12153-3



**JOSEF HOFFMANN** Brtnice 1870 – 1956 Vienna **WIENER WERKSTÄTTE**

69. CENTREPIECE

**Designed by:** Josef Hoffmann, Vienna, around 1920  
**Executed by:** Wiener Werkstätte, model no. S 5178 (S t.), S sh 6, (S 5100)  
**Marked:** JH, WIENER WERK STÄTTE (3 lines), MADE IN AUSTRIA, 900, the symbols of Mercury (official Austrian export mark), triangle (most probably American import mark)

Silver, chased and hammered, hand polished, very good original condition  
H 13.5 cm, Ø 24 cm

Provenance: private property, USA

Ref.: Wiener Werkstätte archives at the Museum of Applied Arts, Vienna, design drawing inv. no. KI 12003-1



**JOSEF HOFFMANN** attr. Brtnice 1870 – 1956 Vienna **WIENER WERKSTÄTTE**

70. BROOCH

Designed by: Josef Hoffmann attr., Vienna,  
Executed by: Wiener Werkstätte  
Marked: WW, indistinguishable Austrian hallmark (A for Vienna)

Gilt silver, very fine bead-and-reel decoration, very good original condition  
5 x 1.5 cm

Provenance: private property, Germany



**JOSEF HOFFMANN** Brtnice 1870 – 1956 Vienna **WIENER WERKSTÄTTE**

71. SILVER CIGARETTE CASE

Designed by: Josef Hoffmann, Vienna, before 1913  
Executed by: Wiener Werkstätte, model no. S 3003  
Marked: WW, JH, Austrian hallmark (A for Vienna, 2 for 900); leather case: WIENER WERK STÄTTE (3 lines), WW

Silver, gilt interior, very good original condition  
Leather case: H 11 cm, W 12 cm; Cigarette case: H 8 cm, W 9.5 cm

Provenance: private property, USA

Ref.: Archives of Wiener Werkstätte, Museum of Applied Arts, Vienna, design drawing inv. no. KI 12078-15



**JOSEF HOFFMANN** Brtnice 1870 – 1956 Vienna **WIENER WERKSTÄTTE**

72.1. VASE/72.2. BOWL

**Designed by:** Josef Hoffmann, Vienna, before 1911  
**Executed by:** Wiener Werkstätte, model no. M 1817 (vase)  
**Marked:** JH, WIENER WERK STÄTTE (3 lines)

Brass, hand polished, vase repaired on stand, good original condition  
**Vase:** H 27 cm, **Bowl:** H 9 cm

Provenance: estate of Ferdinand Hodler, Geneva

Ref.: Wiener Werkstätte archives at the Museum of Applied Arts, Vienna, design drawing inv. no. KI 12067-15-1, model no. M 1817



**JOSEF HOFFMANN** Brtnice 1870 – 1956 Vienna **WIENER WERKSTÄTTE**

73. INKWELL

**Designed by:** Josef Hoffmann, Vienna, before 1924  
**Executed by:** Wiener Werkstätte, model no. M sz 5  
**Marked:** JH, WIENER WERK STÄTTE (3 lines), MADE IN AUSTRIA

Brass, hand polished, original glass liner, very nice original condition  
**H** 11.5 cm, **22.5 x 22.5 cm**

Provenance: private property, England

Ref.: Wiener Werkstätte archives at the Museum of Applied Arts, Vienna, design drawing inv. no. KI-12067-1, model no. M sz 5



**JOSEF HOFFMANN** Brtnice 1870 – 1956 Vienna **WIENER WERKSTÄTTE**

74.1.-4. FOUR CIGARETTE BOXES

Designed by: Josef Hoffmann, 1912 until 1925  
 Executed by: Wiener Werkstätte, model no. M 3491 (largest box)  
 Marked: JH, WIENER WERK STÄTTE (3 lines), MADE IN AUSTRIA

Brass, hand polished, very good original condition  
 Largest box: H 6.5 cm, W 11.5 cm, D 9.5 cm; Smallest box: H 4 cm, W 10 cm, D 8 cm

Provenance: private property, USA; Smallest box: estate of Ferdinand Hodler, Geneva

Ref.: Wiener Werkstätte archives at the Museum of Applied Arts, Vienna, design drawing inv. no. KI 12047-20, model no. M 3491



**MAX SNISCHEK** Dürnkrut in Lower Austria 1891 – 1958 Hinterbrühl near Mödling **WIENER WERKSTÄTTE**

75. WOODEN BOX

Box designed by: Josef Hoffmann attr., Vienna, around 1925  
 Enamel designed by: Max Snischek, before 1926  
 Executed by: Wiener Werkstätte, around 1928-1930, enamel plaque: works no. KW 1626/2

Wood, enamel plaque, very good original condition  
 H 7 cm, W 17 cm, D 11.5 cm

Provenance: private property, England

Ref.: Wiener Werkstätte archives at the Museum of Applied Arts, Vienna, design drawing inv. no. KI 13037-7; W. Neuwirth, Wiener Werkstätte, Vienna 1984, p. 227, ill. 179



**JOSEF HOFFMANN** Brno 1870 – 1956 Vienna **WIENER WERKSTÄTTE**

76. A PAIR OF VASES

**Designed by:** Josef Hoffmann, Vienna, before 1920  
**Executed by:** Wiener Werkstätte, from 1920 onwards, model no. M 3067  
**Marked:** JH, WIENER WERK STÄTTE (3 lines), MADE IN AUSTRIA  
Brass, chased and hammered, hand polished, excellent original condition  
H 19,5 cm

**Provenance:** private property, France and USA

**Ref.:** A contemporary photograph is preserved in the Wiener Werkstätte photographic archives at the Austrian Museum of Applied Arts (MAK), Vienna, inv. no. WWF 114-10-1



**JOSEF HOFFMANN** Brno 1870 – 1956 Vienna **WIENER WERKSTÄTTE**

77. A PAIR OF LOOP-HANDLED CENTREPIECES

**Designed by:** Josef Hoffmann, 1924  
**Executed by:** Wiener Werkstätte, model no. M sh 17  
**Marked:** JH, WIENER WERK STÄTTE (3 lines), MADE IN AUSTRIA  
Brass, chased and hammered, hand polished, excellent original condition  
H 19 cm, W 29,5 cm

**Provenance:** private property, Austria

**Ref.:** Wiener Werkstätte sales catalogue, 1928, p. 405; Wiener Werkstätte archives, Austrian Museum of Applied Arts, Vienna, design drawing inv. no. K 12059-9, model no. M sh 17



78. ART DECO WINE COOLER

**Designed and executed:** Germany, 1930s  
**Marked:** 900, Kennedy  
Silver, 900/1000, very good condition  
H 21 cm, Ø 19 cm

Provenance: private property, Germany



JOSEF HOFFMANN attr. Brtnice 1870 – 1956 Vienna **JAROSINSKI & VAUGOIN**

79. TRAY

**Designed by:** Josef Hoffmann attr.  
**Executed by:** Wiener Silberschmiede Jarosinski & Vaugoin, Vienna, around 1925  
**Marked:** goblet (company's mark for Jarosinski & Vaugoin), 800, Austrian hallmark - head of toucan (W for Vienna, 4 for 800)  
Silver, excellent original condition  
L 48.5 cm, W 20.5 cm

Provenance: private property, Austria

Ref.: Drawing archives of Wiener Silberschmiede Jarosinski & Vaugoin, design drawing inv. no. 979



**WERKSTÄTTE HAGENAUER**

80. SPORTING FIGURES

**Designed by:** Werkstätte Hagenauer, Vienna, 1927  
**Executed by:** Werkstätte Hagenauer, 1930s  
**Marked:** WHW in circle, MADE IN AUSTRIA

Bronze, excellent original condition  
 Polo Player: H 11.5 cm, W 12 cm; Golfer: H 10 cm, W 4 cm; Swinging Golfer: H 13.5 cm, W 7 cm

Provenance: private property, USA

Ref.: A contemporary photograph is preserved in the Hagenauer archives at the Austrian Museum of Applied Arts (MAK), Vienna, inv. no. haf-424-1\_1



**KARL HAGENAUER** 1898 – Vienna – 1956 **WERKSTÄTTE HAGENAUER**

81. CANDLESTICK AND ASHTRAY

**Designed by:** Karl Hagenauer, Vienna, 1928  
**Executed by:** Werkstätte Hagenauer  
**Marked:** WHW in circle, MADE IN AUSTRIA

Brass, excellent original condition  
 Candlestick: H 15 cm, W 12 cm; Ashtray: H 7.5 cm, W 9 cm

Provenance: private property, USA

Ref.: A contemporary photograph is preserved in the Hagenauer archives at the Austrian Museum of Applied Arts (MAK), Vienna, inv. no. haf-200\_1



**FRANZ HAGENAUER**  
1906 – Vienna – 1986  
**WERKSTÄTTE HAGENAUER**

82. JUMPING GREYHOUND

**Designed by:** Franz Hagenauer, Vienna, 1928  
**Executed by:** Werkstätte Hagenauer  
**Marked:** WHW in circle, HAGENAUER WIEN, MADE IN AUSTRIA  
Brass, nickel-plated, excellent original condition  
H 10 cm, W 11 cm

Provenance: private property, Germany

Ref.: comp. catalogue of Werkstätte Hagenauer, Vienna 1928, reprint 1999, p. 24

**WERKSTÄTTE HAGENAUER**

83. FEMALE GOLF PLAYER

**Designed by:** Werkstätte Hagenauer, Vienna, 1927  
**Executed by:** Werkstätte Hagenauer  
**Marked:** WHW in circle, MADE IN AUSTRIA  
Brass, nickel-plated, excellent original condition  
H 14 cm

Sincere thanks to Dr. Maria-Luise Jesch, Austrian Museum of Applied Arts Vienna, Hagenauer archives for this information.

Provenance: private property, USA



**WERKSTÄTTE HAGENAUER**

84. A PAIR OF BOOKENDS

**Designed by:** Werkstätte Hagenauer, Vienna, around 1928  
**Executed by:** Werkstätte Hagenauer  
**Marked:** WHW in circle, MADE IN AUSTRIA  
Brass, nickel-plated, very good original condition  
H 15 cm

Sincere thanks to Dr. Maria-Luise Jesch, Austrian Museum of Applied Arts Vienna, Hagenauer archives for this information.

Provenance: private property, Germany





**FRANZ HAGENAUER** 1906 – Vienna – 1986 **WERKSTÄTTE HAGENAUER**

85. A PAIR OF GIRAFFE TABLE LAMPS

**Designed by:** Franz Hagenauer  
**Executed by:** Werkstätte Hagenauer, Vienna, 1928  
**Marked:** WHW in circle, MADE IN AUSTRIA  
 Brass, nickel-plated, one ear replaced, newly rewired, lampshades replaced, very good original condition  
 H 28 cm, Ø 8 cm

Ref.: A contemporary photograph is preserved in the Hagenauer archives at the Austrian Museum of Applied Arts (MAK), Vienna, inv. no. haf-69-1\_1



**KARL HAGENAUER** 1898 – Vienna – 1956 **WERKSTÄTTE HAGENAUER**

86. DANCER

**Designed by:** Karl Hagenauer, Vienna, 1925  
**Executed by:** Werkstätte Hagenauer, Vienna, 1925 until 1929  
**Marked:** WHW in circle, MADE IN AUSTRIA, HAGENAUER WIEN  
 Brass nickel-plated, excellent original condition  
 H 29.5 cm

**Provenance:** private property, England

Ref.: A contemporary photograph is preserved in the Hagenauer archives at the Austrian Museum of Applied Arts (MAK), Vienna, inv. no. haf-442-2\_1



**FRANZ HAGENAUER** 1906 – Vienna – 1986 **WERKSTÄTTE HAGENAUER**

87. FEMALE TORSO

**Designed by:** Franz Hagenauer, Vienna, 1950s  
**Executed by:** Werkstätte Hagenauer, Vienna, 1950s  
**Marked:** HAGENAUER WIEN, WHW in circle  
Solid walnut, brass, excellent original condition  
H 35 cm, W 12 cm

Provenance: private property, Belgium

Ref.: comp. M. Wenzl-Bachmayr (ed.), Hagenauer. Wiener Moderne und Neue Sachlichkeit, Vienna 2011, p. 111



**FRANZ HAGENAUER** 1906 – Vienna – 1986 **WERKSTÄTTE HAGENAUER**

88. ROOSTER

**Designed by:** Franz Hagenauer, Vienna, 1950s  
**Executed by:** Werkstätte Hagenauer, Vienna, 1953 until 1966  
**Marked:** WHW in circle, MADE IN AUSTRIA, Handmade, HAGENAUER WIEN  
Walnut hand carved, brass, very good original condition  
H 29.5 cm

Sincere thanks to Dr. Maria-Luise Jesch, Austrian Museum of Applied Arts Vienna, Hagenauer archives for this information.

Provenance: private property, USA



**FRANZ HAGENAUER** 1906 – Vienna – 1986 **WERKSTÄTTE HAGENAUER**

89. FAWN

**Designed by:** Franz Hagenauer, Vienna, around 1935

**Executed by:** Werkstätte Hagenauer, Vienna, 1936 until 1962

**Marked:** Hagenauer Wien, WHW in circle, MADE IN AUSTRIA, HANDMADE

Wood, ebonized and polished, excellent original condition

The figure was also executed as a stag with antlers. In my view, the polished surface suggests that it is an early version of the late 1930s.

H 17.5 cm, W 40 cm

Sincere thanks to Dr. Maria-Luise Jesch, Austrian Museum of Applied Arts Vienna, Hagenauer archives for this information.

Provenance: private property, Belgium



**FRANZ HAGENAUER** 1906 – Vienna – 1986 **WERKSTÄTTE HAGENAUER**

90. SOEMMERRING'S GAZELLE

**Designed by:** Franz Hagenauer, Vienna, around 1950

**Executed by:** Werkstätte Hagenauer, Vienna, 1955 until 1964

**Marked:** WHW in circle, Handmade, MADE IN AUSTRIA, HAGENAUER WIEN

Tropical wood, carved, horns: patinated bronze, base: brass, very good original condition

H 35 cm, W 27 cm

Sincere thanks to Dr. Maria-Luise Jesch, Austrian Museum of Applied Arts Vienna, Hagenauer archives for this information.  
Provenance: private property, USA

Ref.: comp. P. Kovacs (ed.) Hagenauer Zettelkatalog, Vienna 1957, Bearbeitete Edition 2011, No. 4495



**FRANZ HAGENAUER** 1906 – Vienna – 1986 **WERKSTÄTTE HAGENAUER**

91. GAZELLE

**Designed by:** Franz Hagenauer, Vienna, 1930s

**Executed by:** Werkstätte Hagenauer, Vienna, 1937 until 1964

**Marked:** WHW in circle, Handmade, MADE IN AUSTRIA, HAGENAUER WIEN

Solid walnut, carved, brass, repair on the right foreleg, very good original condition

H 19 cm, W 24 cm

Sincere thanks to Dr. Maria-Luise Jesch, Austrian Museum of Applied Arts Vienna, Hagenauer archives for this information.

Provenance: private property, USA



**WERKSTÄTTE HAGENAUER**

92. BISON

**Designed by:** Werkstätte Hagenauer

**Executed by:** Werkstätte Hagenauer, Vienna, 1936/37 until 1961

**Marked:** WHW in circle, Handmade, MADE IN AUSTRIA, HAGENAUER WIEN

Walnut wood?, carved, surface restored, brass horns; when removing a subsequently applied black lacquer layer the marks were made illegible, very good condition

H 16.5 cm, W 29.5 cm, D 8 cm

Sincere thanks to Dr. Maria-Luise Jesch, Austrian Museum of Applied Arts Vienna, Hagenauer archives for this information.

Provenance: private property, Germany



**FRANZ HAGENAUER** 1906 – Vienna – 1986 **WERKSTÄTTE HAGENAUER**

93. CHRIST

**Designed by:** Franz Hagenauer, Vienna, around 1950  
**Executed by:** Werkstätte Hagenauer  
**Marked:** WHW in circle, Handmade, MADE IN AUSTRIA, HAGENAUER WIEN  
Mahogany, carved, brass, very good original condition  
H 16.5 cm, W 13 cm

Provenance: private property, Germany

Ref.: P. Kovacs (ed.) Hagenauer Zettelkatalog, Vienna 1957, Bearbeitete Edition 2011, No. 5980



**FRANZ HAGENAUER** 1906 – Vienna – 1986 **WERKSTÄTTE HAGENAUER**

94. HUNTER

**Designed by:** Franz Hagenauer, Vienna, before 1960  
**Executed by:** Werkstätte Hagenauer, Vienna, 1960 until 1962  
**Marked:** WHW in circle, MADE IN AUSTRIA, Handmade  
Walnut, stained in various colours, bristles, brass, gun renewed, excellent original condition  
H 30 cm

Sincere thanks to Dr. Maria-Luise Jesch, Austrian Museum of Applied Arts Vienna, Hagenauer archives for this information.  
Provenance: private property, Austria



**FRANZ HAGENAUER** 1906 – Vienna – 1986 **WERKSTÄTTE HAGENAUER**

95. PARROT

**Designed by:** Franz Hagenauer, Vienna, around 1960

**Executed by:** Werkstätte Hagenauer, Vienna, 1963

**Marked:** HAGENAUER WIEN, WHW in circle, Handmade, MADE IN AUSTRIA

Brass, multi-coloured acrylic glass, some cracks in the acrylic, good original condition  
H 28 cm, W 28 cm

Sincere thanks to Dr. Maria-Luise Jesch, Austrian Museum of Applied Arts Vienna, Hagenauer archives for this information.  
Provenance: private property, Germany



**FRANZ HAGENAUER** 1906 – Vienna – 1986 **WERKSTÄTTE HAGENAUER**

96. ROOSTER

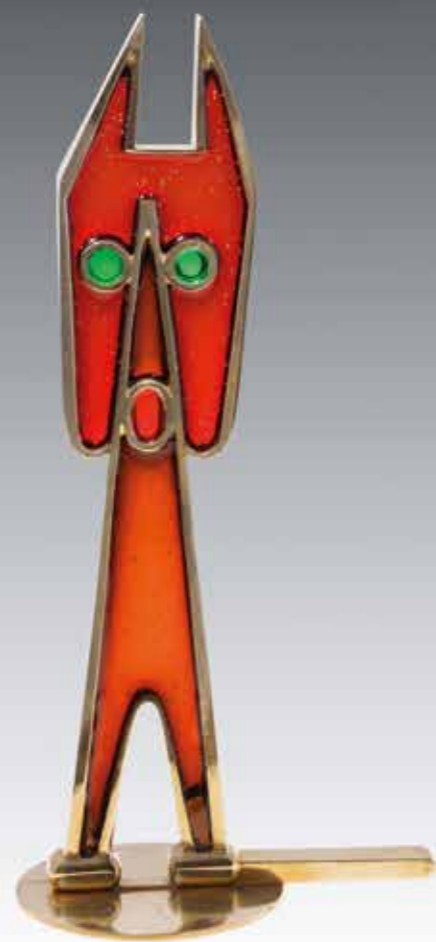
**Designed by:** Franz Hagenauer, Vienna, around 1960

**Executed by:** Werkstätte Hagenauer, Vienna, 1960s

**Marked:** HAGENAUER VIENNA, MADE IN AUSTRIA; HAND WORK

Brass, polished, multi-coloured acrylic glass (resin), some cracks in the acrylic, good original condition  
H 34 cm, W 28 cm

Sincere thanks to Dr. Maria-Luise Jesch, Austrian Museum of Applied Arts Vienna, Hagenauer archives for this information.  
Provenance: private property, Austria



**KARL HAGENAUER** attr. 1898 – Vienna – 1956 **WERKSTÄTTE HAGENAUER**

97. CAT

**Designed by:** Karl Hagenauer attr., Vienna, 1950s  
**Executed by:** Werkstätte Hagenauer, Vienna, 1950s  
**Marked:** HAGENAUER WIEN, WHW in circle, Handmade, MADE IN AUSTRIA  
Brass, multi-coloured acrylic glass, excellent original condition  
H 23 cm

Provenance: private property, Austria



**FRANZ HAGENAUER** 1906 – Vienna – 1986 **WERKSTÄTTE HAGENAUER**

98. BIRD

**Designed by:** Franz Hagenauer, Vienna, 1934, in wood  
**Executed by:** Werkstätte Hagenauer, Vienna, 1984 until 1987  
**Marked:** WHW in circle, HAGENAUER WIEN, MADE IN AUSTRIA  
Brass, nickel-plated, excellent original condition  
H 22.5 cm, W 41 cm

Sincere thanks to Dr. Maria-Luise Jesch, Austrian Museum of Applied Arts Vienna, Hagenauer archives for this information.  
Provenance: private property, Germany

Ref.: M. Wenzl-Bachmayer (ed.), Hagenauer. Wiener Moderne und Neue Sachlichkeit, exhibition catalogue 2011, Museum Postsparkasse, Vienna 2011, p. 40

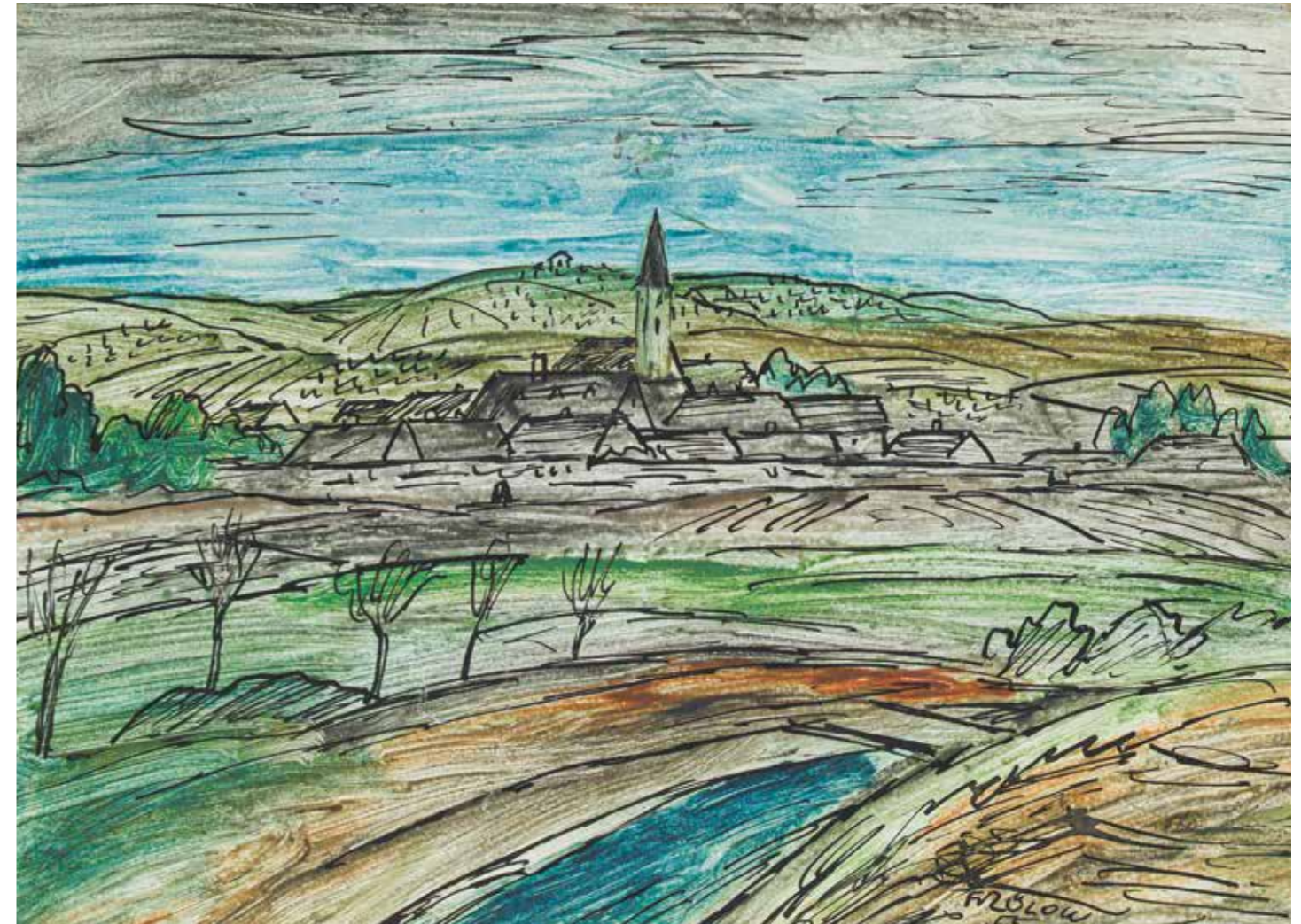


**FRANZ VON ZÜLOW**  
1883 – Vienna – 1963

99. LANDSCAPE

Signed and dated on lower left: Franz Zülow 1923  
Mixed media on paper, newly framed, very good condition  
Picture size: H 32 cm, W 48 cm; Frame size: H 48 cm, W 63.5 cm

Provenance: private property, Israel



**FRANZ VON ZÜLOW**  
1883 – Vienna – 1963

100. VIEW OF HAUGSDORF

Signed and dated on lower right: F v Zülow (19)55  
Mixed media on paper, newly framed, very good condition  
Picture size: H 29.5 cm, W 41 cm; Frame size: H 46.5 cm, W 57.5 cm

Provenance: private property, Austria





**OSKAR LASKE**

Czernowitz 1874 – 1951 Vienna

101. ROTHENBURG OB DER TAUBER

Signed: O. Laske; Titled on lower left: Rothenburg  
Water colour and gouache on paper, framed, very good condition  
Picture size: H 38 cm, W 43 cm; Frame size: H 52 cm, W 63 cm

Provenance: private property, USA

Ref.: H. Fuchs, *Die österreichischen Maler des 19. Jahrhunderts, supplementary volume 2, ch. 11*; F. Novotny, *Oskar Laske, Vienna 1954*



**OSKAR LASKE**

Czernowitz 1874 – 1951 Vienna

102. CARNIVAL REVELRY

Signed on lower left: O. Laske

Mixed media on paper, newly framed, very good condition  
Picture size: H 27.5 cm, W 19.5 cm; Frame size: H 41 cm, W 26 cm

Provenance: private property, Austria



**OSKAR LASKE**  
Czernowitz 1874 – 1951 Vienna

103. VILLAGE SCENE

Signed on lower right: O. Laske  
Water colour and gouache on paper, framed, very good condition  
Picture size: H 38 cm, W 43 cm; Frame size: H 52 cm, W 63 cm

Provenance: private property, USA

Ref.: H. Fuchs, Die österreichischen Maler des 19. Jahrhunderts, supplementary volume 2, ch. 11; F. Novotny, Oskar Laske, Vienna, 1954



**OSKAR LASKE**  
Czernowitz 1874 – 1951 Vienna

104. A MARKETPLACE IN LEMBERG

Signed on lower left: O. Laske; Titled in lower centre: Ein Marktplatz in Lemberg  
Watercolour on paper, newly framed, very good condition  
Picture size: H 35.3 cm, W 45.5 cm; Frame size: H 52 cm, W 66 cm

Provenance: private property, Switzerland

Ref.: H. Fuchs, Die österreichischen Maler des 19. Jahrhunderts, supplementary volume 2, ch 11; F. Novotny, Oskar Laske, Vienna, 1954



**HANS STAUDACHER**  
St. Urban at Lake Ossiach 1923

105. UNTITLED

Signed and dated on lower right: H. Staudacher (19)90  
Mixed media on paper, newly framed, very good condition  
Picture size: H 47 cm, W 32 cm; Frame size: H 74 cm, W 56 cm

Provenance: private property, Austria

## IM VIE:ARTPORT GEHEN IHRE KUNSTWERKE SICHER VOR ANKER.

Über 8000 m<sup>2</sup> voll klimatisiertes Kunstlager eröffnen ungeahnte Möglichkeiten für Kunstwerke.

Depoflächen für Einzelstücke bis hin zu privaten, diskreten Kojen für ganze Sammlungen. Immer gesichert, immer klimatisiert, immer perfekt und individuell betreut. Darüber hinaus ein Zolllager für Kunstwerke innerhalb der EU, steuer- bzw. abgabenbefreit. Zusammen mit unserem Showroom die perfekte Umgebung für Kunstliebhaber, Kunstsammler, Kunsthändler.

### Kontakt:

Birgit Vikas birgit.vikas@vieartport.at  
Andreas Kratochwil andreas.kratochwil@vieartport.at  
phone +43 1 748 55 44  
fax +43 1 748 55 34

Bertl-Hayde-Gasse 4, 1110 Wien, email: office@vieartport.at, [www.vieartport.at](http://www.vieartport.at)



## Second to none

Best terms and conditions

**M.A.I. Managing Art Insurance**

Am Rudolfsplatz | Gölsdorfgasse 3/6  
1010 Vienna | Austria | Tel. +43 1 532 08 40  
office@bartaart.com | [www.bartaart.com](http://www.bartaart.com)

### Warum Kunst bei BARTA versichern?

Barta engagiert sich für den Schutz und die Erhaltung von Kunstgegenständen. Es beraten Sie erfahrene Kunsthistoriker und Experten. Regelmäßig wird Ihre Kunstsammlung dem aktuellen Marktwert angepasst. Barta versichert gegen alle Risiken und Gefahren, denen Ihre Kunstwerke ausgesetzt sind und beinhaltet Risiken, die mit herkömmlichen Versicherungen nicht abgedeckt sind.

Barta bietet länderübergreifende Deckungskonzepte und Schadensregulierungen.

### Why insure art at BARTA?

*Barta is committed to the protection and the Preservation of works of art. We are experienced art historians and our experts are here to advise you. Your art collection will be regularly appraised and changed to reflect the current market value. Barta insures against All Risks to include the perils to which your artworks are exposed. This will include Risks which are generally not covered under conventional insurances.*

*International cooperation means that Barta offers a global insurance concept for your art incl. worldwide loss handling.*

For further assistance please call Renate Schwarz-Barta:  
+43 1 532 08 40 | [rs@bartaart.com](mailto:rs@bartaart.com)





bel etage